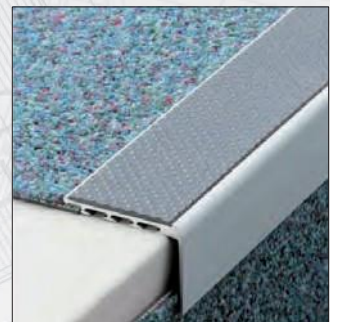
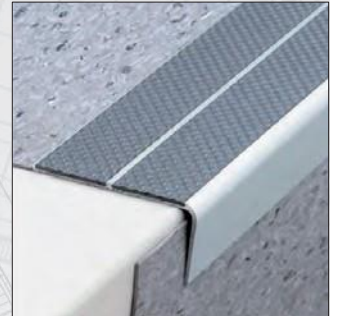
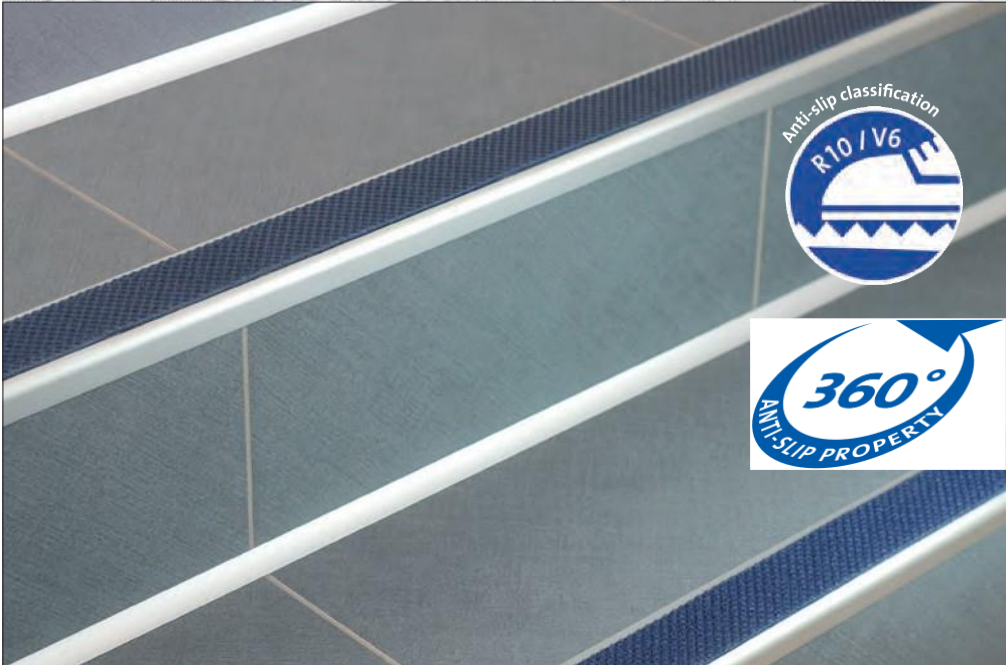


TREDSAFE

1/4

Step-nosing profiles with a non-slip insert
for all stair coverings suitable for subsequent
installation / renovation

DURAL



Tough materials for high resilience:

DIAMONDRED is made from a special blend of PVC, silica quartz and polymeric plastic and is characterised by its high resilience and excellent properties:

- Outstanding slip resistance exceeds international standards
- Slip resistant in wet and dry conditions
- Extreme wear resistance
- Resistant to sunlight
- Resistant to deformation and tension
- Easy installation thanks to self-adhesive backing
- Large selection of colours – safety or subtle shades



Installing DIAMONDRED and TREDSAFE:

TREDSAFE step-nosing profiles and DIAMONDRED inserts are quick and easy to install. The profiles are supplied pre-drilled to facilitate screw fixing. Damaged steps should be repaired prior to fixing the step-nosing profile. The safety insert is manufactured with a self-adhesive backing. The insert is installed by removing the backing paper and then pressing it firmly into the profile.



The right care for a long life:

DIAMONDRED features a polyurethane coating which reduces dirt retention. The three dimensional pyramid pattern provides excellent slip resistance in the wet but requires more care than a smooth flooring surface. Cleaning is best achieved by scrubbing with a hard bristle brush in conjunction with warm soapy water or with suitable cleaning machines.

Stairs are often a trip hazard, whether indoors or out, and slipping on stairways is not uncommon. Take action to prevent such accidents and enhance safety by installing the new TREDSAFE step-nosing profiles on all your stairs.

STONE CONCEPT HOLDINGS P/L

3/179-183 Woodpark Road,
Smithfield, NSW, 2164

Tel. +61 (02) 9757 3880

Fax +61 (02) 9818 5073

products@stoneconcept.com.au

www.stoneconcept.com.au

Step-nosing profiles with a non-slip insert for all stair coverings suitable for subsequent installation / renovation



Tiled stairs



Parquet stairs



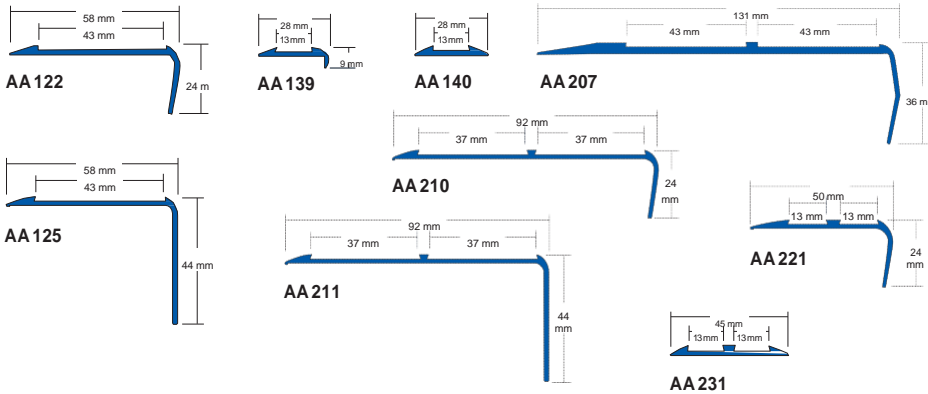
Pu resin stairs



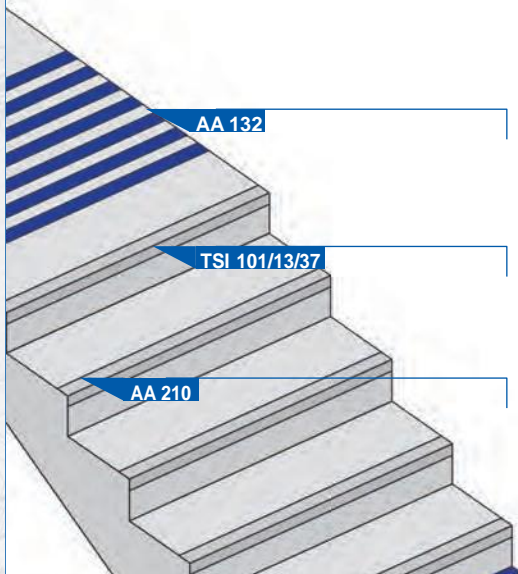
Laminate stairs



TREDSAFE profiles with a flat to zero sloping contour at the back edge



TREDSAFE safety profiles for tactile covering



AA 132

Safeguarding the stair head with flooring/attention and warning markings.

TSI 101/13/37

Contrasting first and last riser for enhancing perception of start and end of staircase.

AA 210

Contrasting stair edges for better visual identification of each step.

Safeguarding the stair head with flooring/attention and warning markings.

AA 132



AA 132



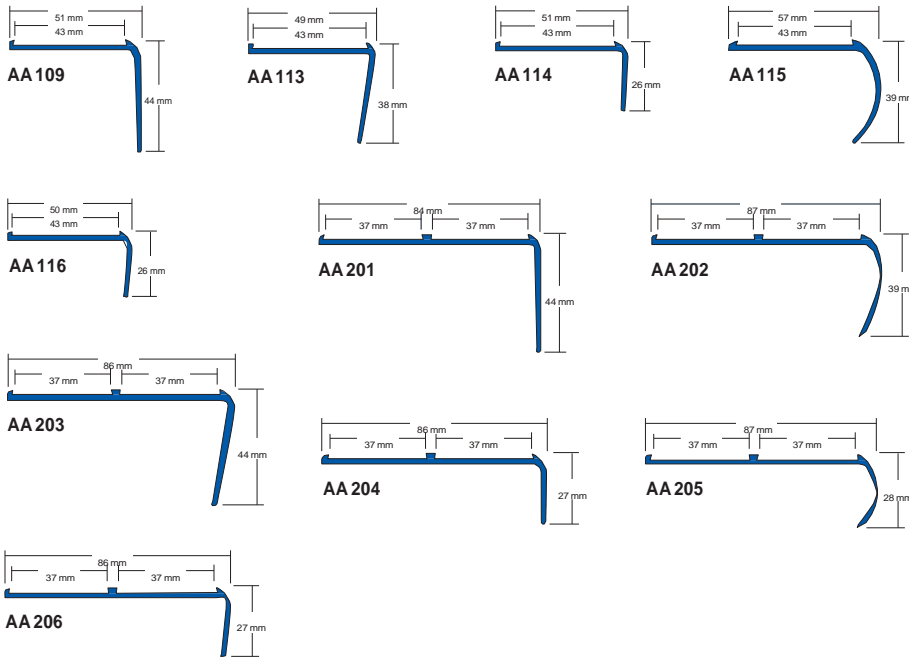
Unique structure of Diamondtred safety insert. For maximum grip.

STONE CONCEPT HOLDINGS P/L
3/179-183 Woodpark Road,
Smithfield, NSW, 2164
Tel. +61 (02) 9757 3880
Fax +61 (02) 9818 5073
products@stoneconcept.com.au

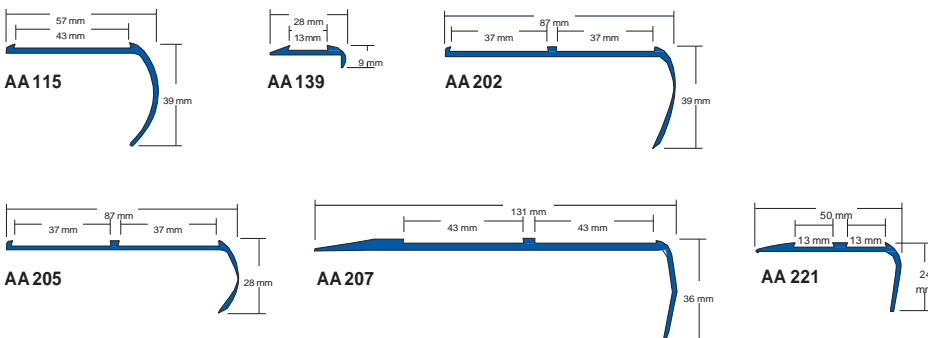
Step-nosing profiles with a non-slip insert for all stair coverings suitable for subsequent installation / renovation



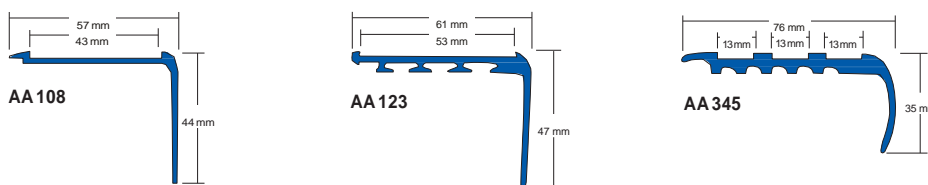
TREDSAFE profiles with flush butt joints for neat flooring transitions



TREDSAFE profiles for a wide range of step edge contours



TREDSAFE profiles with integrated inlet slots for flooring



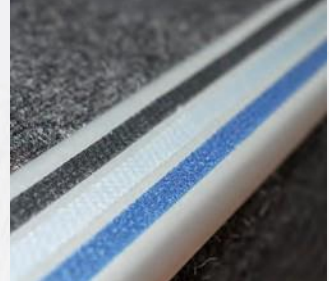
Parquet stairs



Linoleum stairs

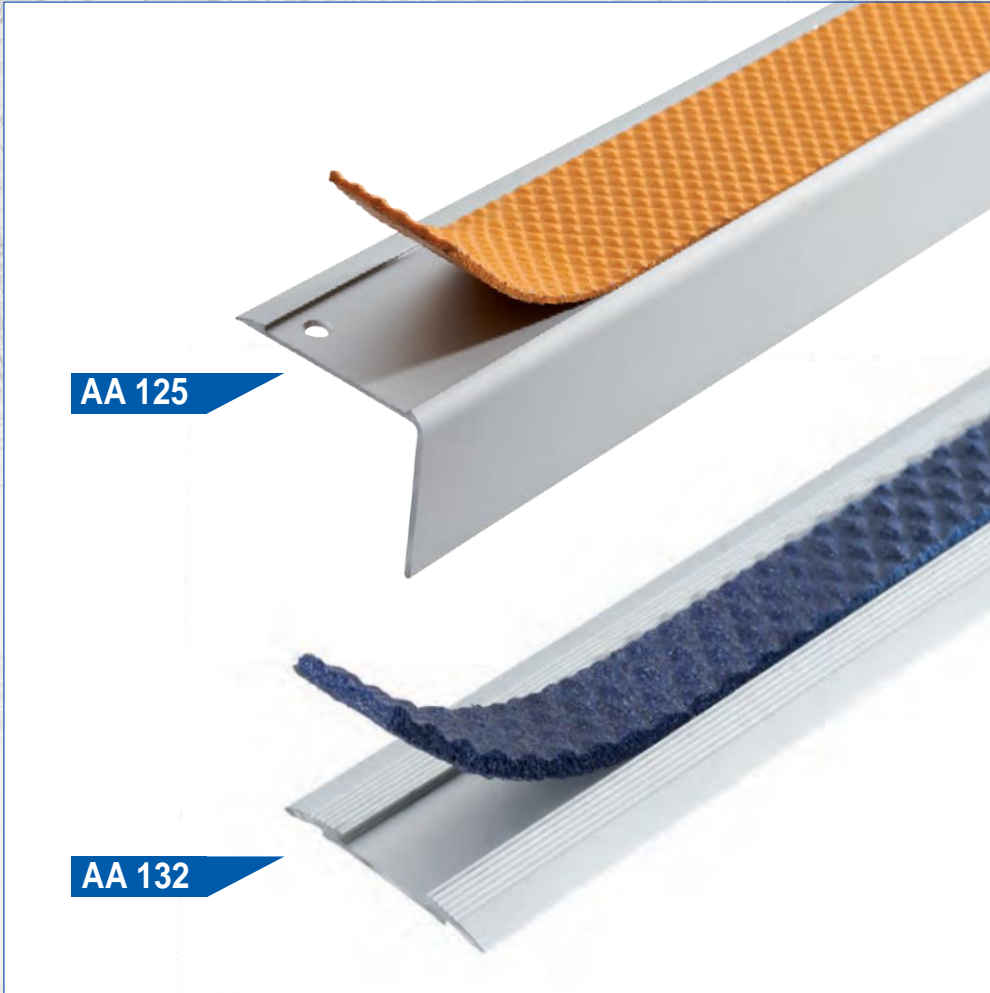


Carpeted stairs



STONE CONCEPT HOLDINGS P/L
 3/179-183 Woodpark Road,
 Smithfield, NSW, 2164
 Tel. +61 (02) 9757 3880
 Fax +61 (02) 9818 5073
 products@stoneconcept.com.au

Step-nosing profiles with a non-slip insert for all stair coverings suitable for subsequent installation / renovation



AA 125

AA 132

**Inserts
(self adhesive)**

-  101 safety white
-  102 safety yellow
-  103 safety green
-  104 safety red
-  105 safety blue
-  119 chevron
-  116 night glow
-  117 super night glow
-  108 light grey
-  111 royal blue
-  106 neutral black
-  107 charcoal grey
-  112 burgundy
-  109 rich brown
-  113 mid grey
-  114 jade green
-  110 putty

DIAMONDTRED - Technical data at a glance*:

MATERIAL:	Special blend of PVC, silica quartz and polymeric plastic
INSTALLATION TEMPERATURE:	≥ 15 °C
DIMENSIONAL STABILITY:	80°C for 6 hours / 0.12%
MOISTURE MOVEMENT:	23°C for 24 hours / 0.02%
HEAT AGEING:	70°C for 15 days
SLIP RESISTANCE:	Work areas / work rooms: R10 / V6 Wet barefoot areas: Class B
FLAMMABILITY:	Class B1
RESISTANCE PROPERTIES:	Resistant to ultraviolet light, oil, grease, petrol, salt, dilute acids and alkalis, common household chemicals and detergents. Organic solvents will soften DIAMONDTRED insert.

* Test certificates are available on request.

STONE CONCEPT HOLDINGS P/L
 3/179-183 Woodpark Road,
 Smithfield, NSW, 2164
 Tel. +61 (02) 9757 3880
 Fax +61 (02) 9818 5073
 products@stoneconcept.com.au